



Planning and Development Department

Development Newsletter

March/April 2018

ATI Physical Therapy

The Plan Commission approved a Conditional Use Permit and variance request by Abacus Architects to construct a new ATI Physical Therapy facility on Superior Avenue just west of Taylor Drive. ATI Physical Therapy services include manual therapy, therapeutic exercise, therapeutic modalities, cardiovascular conditioning, and strength training. Hours of operation are typically 7:00 a.m. to 7:00 p.m. Monday through Saturday. The Architectural Review Board also approved the ATI Physical Therapy facilities.

Marco's Pizza

The Plan Commission approved a Conditional Use and Variance request by Family Video Movie Club to create a new tenant space for Marco's Pizza at the Family Video facility located at 2610 Calumet Drive. Marco's Pizza will be creating a new 2,000 square foot tenant space within the existing Family Video. Their hours will be Sunday through Thursday from 11 a.m. to 11 p.m. and Friday and Saturday 11 a.m. to 12 a.m.

2724 Kohler Memorial Drive

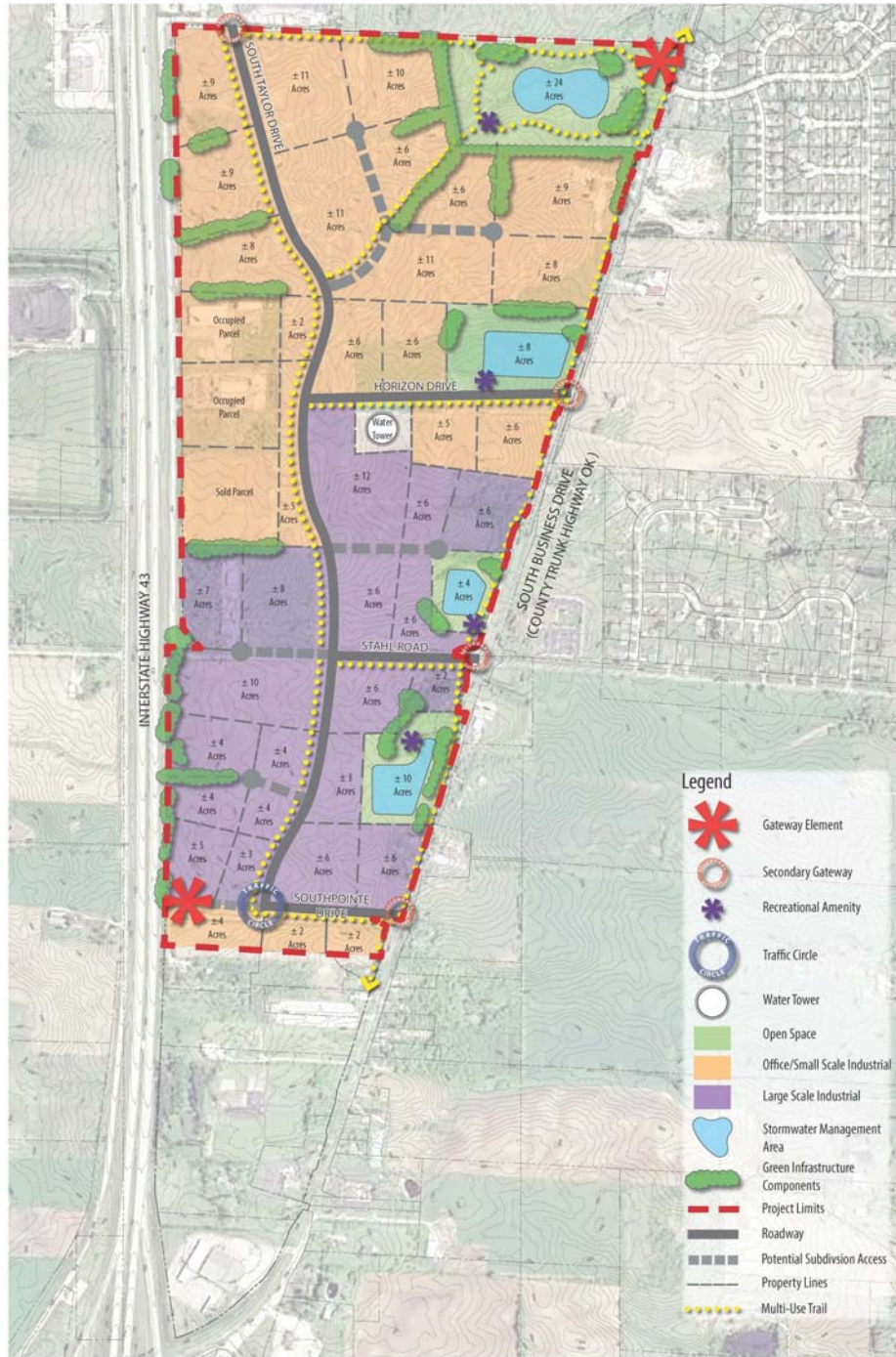
The Plan Commission and Architectural Review Board have both reviewed and approved a request for construction of a new apartment complex to be located at 2724 Kohler Memorial Drive (former Nino's Restaurant). The new multifamily apartment building will be 3 stories with 48 unit market rate apartments with underground parking. One bedroom apartments will range from 870 to 940 square feet and two bedrooms will range from 1060 –1350 square feet in size. Construction is proposed to start Summer of 2018.

Aventuron

Aventuron was issued a sign permit. Aventuron is located at 631 N 8th Street. They sell bikes and biking gear along with camping and hiking gear.

SouthPointe Enterprise Campus

The City opened bids for Phase I improvements. Bid estimates for the project were \$14.8 million. The low bidder was PTS at \$10.5 million. The Common Council is scheduled to award bids at their meeting on April 4, 2018. *See revised SouthPointe Enterprise Campus Master Plan on page 2.*



HITCHCOCK GROUP
 creating... 2008

Master Plan
SouthPointe Enterprise Campus
 Sheboygan, Wisconsin

NORTH

SCALE: 1"=400'

0' 200' 400' 1,200'

ISSUE DATE: MARCH 20, 2018
 All drawings are preliminary and subject to change.
 © 2018 Hitchcock Design Group

CITY OF SHEBOYGAN

Ruekert-Mielke